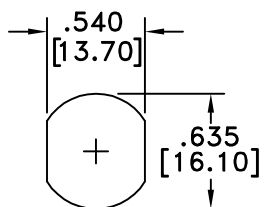
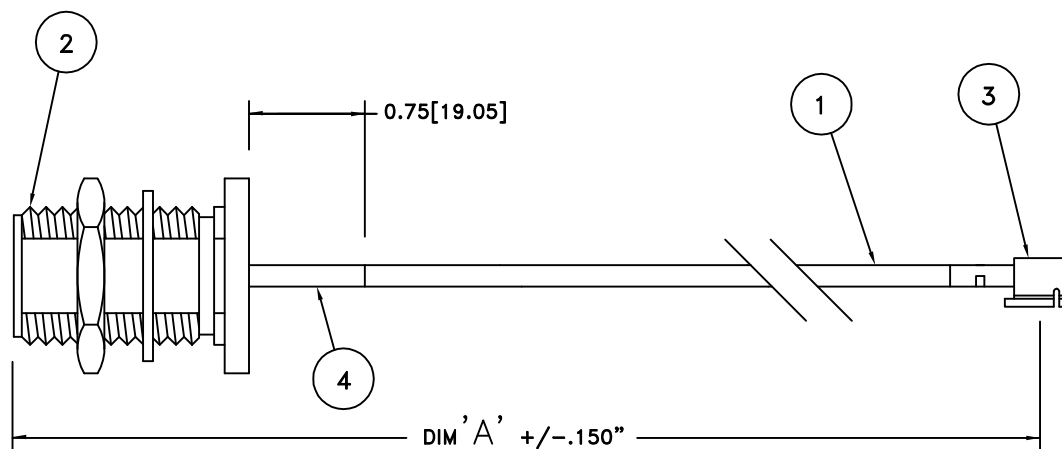


RevNo	Revision note	Date	Checked
1	Initial Release	061616	GC
2	Cable Lengths added; Cable changed to 1.13mm Coax	062816	GC



RECOMMENDED  
MOUNTING HOLE



NOTES:

1. STRIP CABLE ENDS IN ACCORDANCE WITH CONNECTOR SPEC SHEETS.
2. CONSTRUCT CABLE ASSEMBLY IN ACCORDANCE WITH PROCEDURES.
3. TAG WITH PART NUMBER, QUANTITY, AND CUSTOMER PART NUMBER.
4. NOTE CONNECTOR ALIGNMENTS
5. MUST USE RoHS COMPLIANT MATERIALS

PART NO.	DIM "A"	
	INCHES	MILLIMETERS
MWAS-2382-5.50	5.50	139.70
MWAS-2382-7.00	7.00	177.80
MWAS-2382-9.00	9.00	229.00
MWAS-2382-10.00	10.00	254.00
MWAS-2382-12.00	12.00	305.00

MATERIALS

- 1 COAXIAL CABLE, 1.13mm
- 2 MW-350-113, N BULKHEAD JACK for 1.13mm
- 3 MH4L, IPEX for 1.13 Cable
- 4 SHRINKTUBE, BLACK 1/16" POLYOLEFIN

MILLIMETER WAVE TECHNOLOGIES  
6501 W. FRYE ROAD, #23  
CHANDLER, AZ 85226

CABLE ASSEMBLY  
N BULKHEAD JACK - MH4L PLUG  
1.13mm

Designed by  
G.COLEMERE

Checked by  
W. CANON

Approved by  
N. JAIN

File name  
MWAS-2382

TITLE  
MWAS-2382

TOLERANCES  
DIMENSIONS ARE IN INCHES UNLESS  
OTHERWISE SPECIFIED  
DECIMALS ANGULAR  
.XX ± .02 ± .06  
.XXX ± .005  
DO NOT SCALE THIS DRAWING

ALL DIMENSIONS ON THIS DRAWING ARE FOR REFERENCE  
PURPOSES ONLY AND ARE SUBJECT TO CHANGE

REV.  
2  
DATE  
061616

Scale  
NONE  
Sheet  
1 of 1