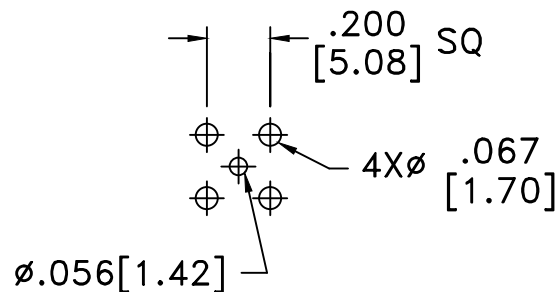
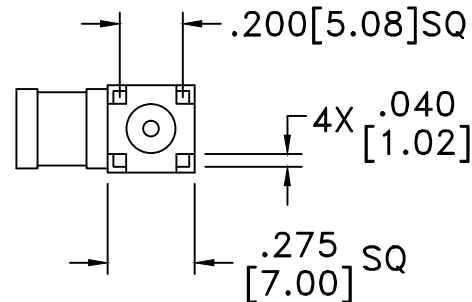
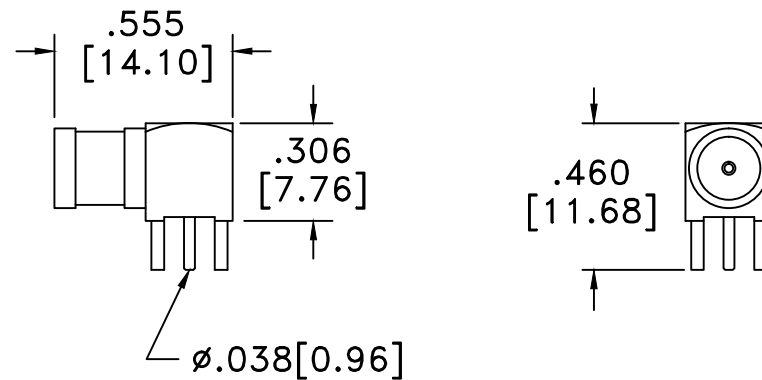


RevNo	Revision Notes	Date	Checked
1	Initial Release	031005	G.C.
2	Body height changed	022509	G.C.



RECOMMENDED
HOLE PATTERN



RoHS Compliant

MATERIALS

BODY	BRASS
BODY PLATING	GOLD
CONTACT	BERYLLIUM COPPER
CONTACT PLATING	GOLD
DIELECTRIC	TEFLON (PTFE)

50 Ohm IMPEDANCE
500V PEAK VOLTAGE RATING
TEMPERATURE RANGE: -55°C TO $+155^{\circ}\text{C}$
INTERFACE DIMENSIONS SIMILAR TO MIL-C-39012

MILLIMETER WAVE TECHNOLOGIES
6501 W. FRYE RD., #23
CHANDLER, AZ 85226

SMB FEMALE R/A
PCB MOUNT 4 LEGS

Designed by N. JAIN	Checked by W. CANON	Approved by A. LEE	File name MWB-3300-G	TITLE MWB-3300-G
------------------------	------------------------	-----------------------	-------------------------	---------------------

TOLERANCES
DIMENSIONS ARE IN INCHES UNLESS
OTHERWISE SPECIFIED
DECIMALS ANGULAR
.XX ± .02 ± .06
.XXX ± .005 ± .01
DO NOT SCALE THIS DRAWING

ALL DIMENSIONS ON THIS DRAWING ARE FOR REFERENCE
PURPOSES ONLY AND ARE SUBJECT TO CHANGE.

REV. 2	Scale NONE
DATE 031005	Sheet 1 of 1