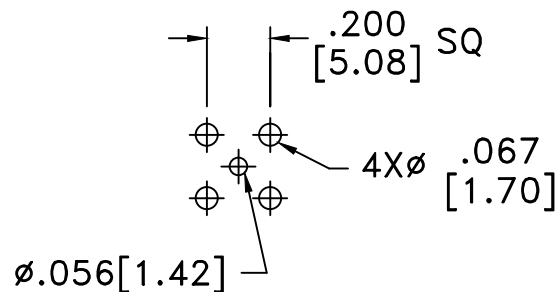
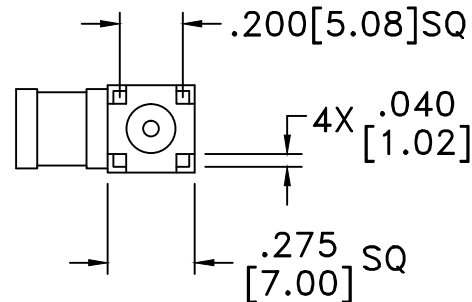
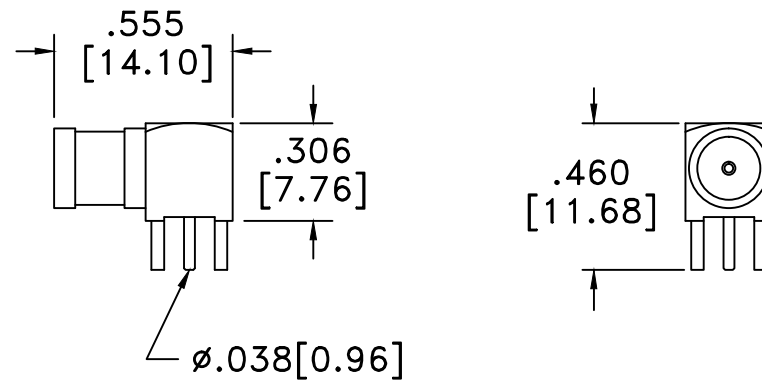


RevNo	Revision Notes	Date	Checked
1	Initial Release	031005	G.C.
2	Body height changed	022509	G.C.



RECOMMENDED
HOLE PATTERN



RoHS Compliant

MATERIALS

BODY	BRASS
BODY PLATING	GOLD
CONTACT	BERYLLIUM COPPER
CONTACT PLATING	GOLD
DIELECTRIC	TEFLON (PTFE)

75 Ohm IMPEDANCE
500V PEAK VOLTAGE RATING
TEMPERATURE RANGE: -55°C TO $+155^{\circ}\text{C}$
INTERFACE DIMENSIONS SIMILAR TO MIL-C-39012

MILLIMETER WAVE TECHNOLOGIES 6501 W. FRYE RD., #23 CHANDLER, AZ 85226		SMB FEMALE R/A PCB MOUNT 4 LEGS 75 OHMS	
Designed by N. JAIN	Checked by W. CANON	Approved by A. LEE	File name MWB-3300-G-75
TOLERANCES DIMENSIONS ARE IN INCHES UNLESS OTHERWISE SPECIFIED DECIMALS ANGULAR .XX ± .02 ± .06 .XXX ± .005 ± .01 DO NOT SCALE THIS DRAWING		TITLE MWB-3300-G-75	
ALL DIMENSIONS ON THIS DRAWING ARE FOR REFERENCE PURPOSES ONLY AND ARE SUBJECT TO CHANGE.		REV. 2	Scale NONE
		DATE 031005	Sheet 1 of 1