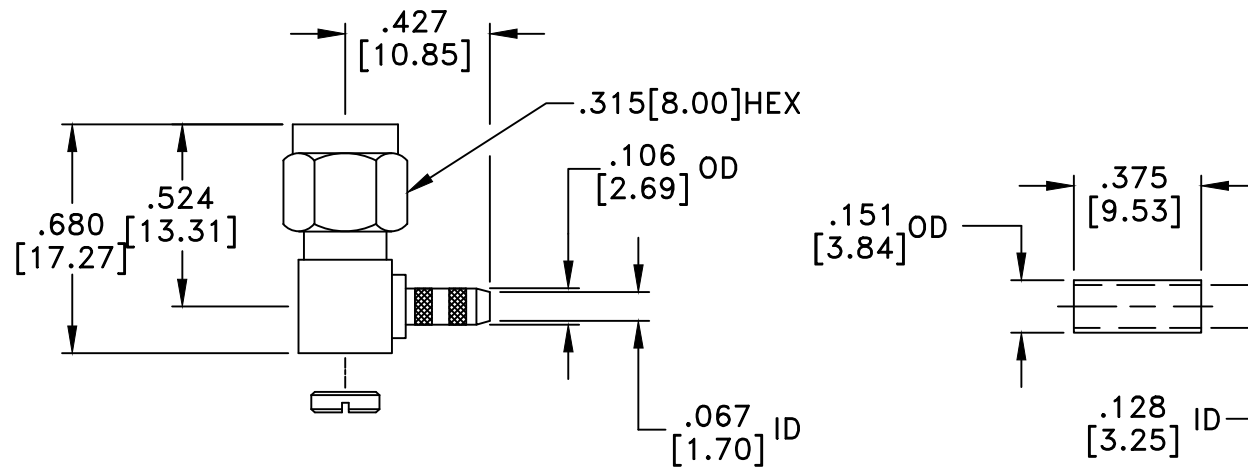
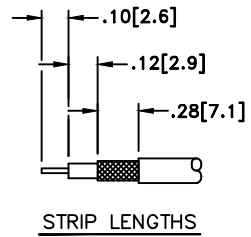


RevNo	Revision note	Date	Checked
1	RoHS Compliant	041105	PC



RoHS Compliant

MATERIAL

BODY	BRASS
BODY PLATING	NICKEL
PIN	BERYLLIUM COPPER
PIN PLATING	GOLD
DIELECTRIC	TEFLON (PTFE)

50 Ohm IMPEDANCE
 500V PEAK VOLTAGE RATING
 TEMPERATURE RANGE: -55°C TO +155°C
 INTERFACE DIMENSIONS SIMILAR TO MIL-C-39012

MILLIMETER WAVE TECHNOLOGIES
 6501 W. FRYE ROAD, #23
 CHANDLER, AZ 85226

SMA PLUG R/A CRIMP
 CABLE END RG316
 REVERSE POLARITY

Designed by N. JAIN	Checked by W CANON	Approved by K WILSON	File name MWA-8001-RP-316	TITLE MWA-8001-RP-316
------------------------	-----------------------	-------------------------	------------------------------	--------------------------

TOLERANCES
 DIMENSIONS ARE IN INCHES UNLESS
 OTHERWISE SPECIFIED
 DECIMALS ANGULAR
 .XX ± .02 ± .06
 .XXX ± .005
 DO NOT SCALE THIS DRAWING

ALL DIMENSIONS LISTED ON THIS DRAWING ARE LISTED FOR
 REFERENCE PURPOSES ONLY AND ARE SUBJECT TO CHANGE.

REV. 1	Scale NONE
Date 021004	Sheet 1 of 1