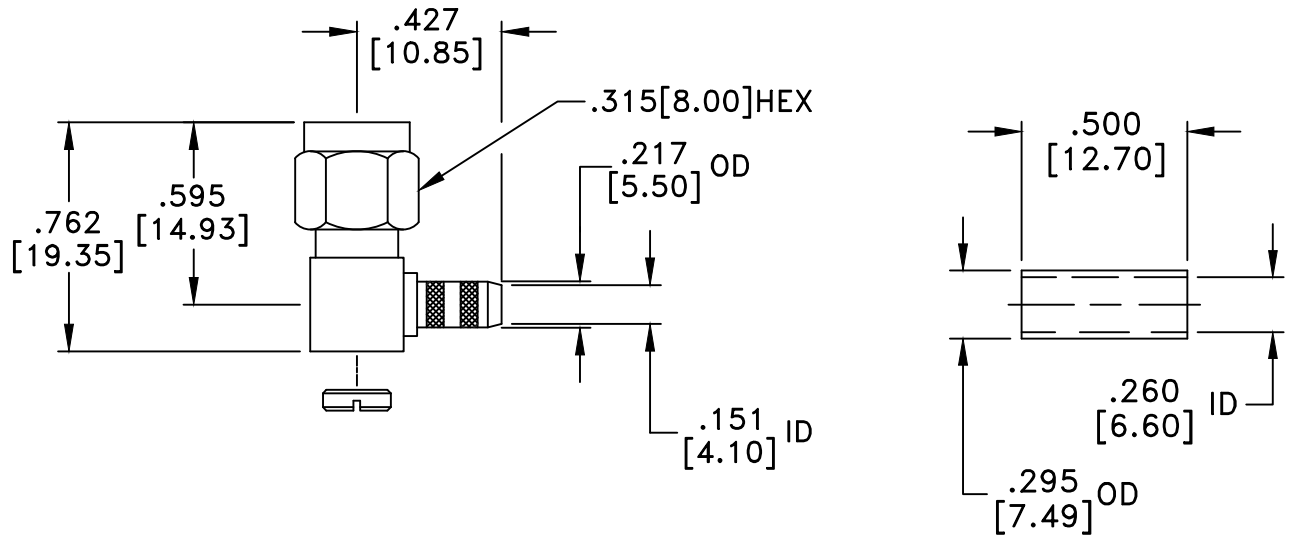
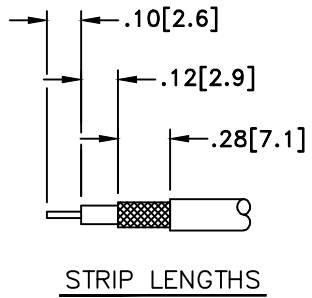


RevNo	Revision note	Date	Checked
1	RoHS Compliant	041105	PC



RoHS Compliant

**MATERIAL**

BODY	BRASS
BODY PLATING	GOLD
PIN	BRASS
PIN PLATING	GOLD
DIELECTRIC	TEFLON (PTFE)

50 Ohm IMPEDANCE  
500V PEAK VOLTAGE RATING  
TEMPERATURE RANGE: -55°C TO +155°C  
INTERFACE DIMENSIONS SIMILAR TO MIL-C-39012

MILLIMETER WAVE TECHNOLOGIES  
6501 W. FRYE ROAD, #23  
CHANDLER, AZ 85226

SMA PLUG R/A CRIMP  
CABLE END LMR240

Designed by N. JAIN	Checked by W CANON	Approved by K WILSON	File name MWA-8001-G-L240	TITLE MWA-8001-G-L240
------------------------	-----------------------	-------------------------	------------------------------	--------------------------

**TOLERANCES**  
DIMENSIONS ARE IN INCHES UNLESS  
OTHERWISE SPECIFIED  
DECIMALS ANGULAR  
XX ± .02 ± .06  
XXX ± .005  
DO NOT SCALE THIS DRAWING

ALL DIMENSIONS LISTED ON THIS DRAWING ARE LISTED FOR  
REFERENCE PURPOSES ONLY AND ARE SUBJECT TO CHANGE.

REV. 1	Scale NONE
Date 041105	Sheet 1 of 1