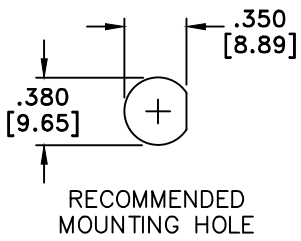
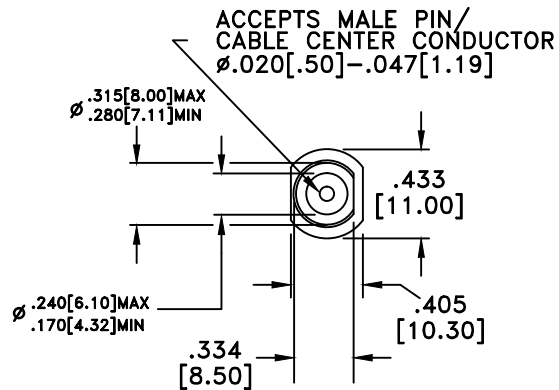


STRIP LENGTHS  
M17/94-RG179

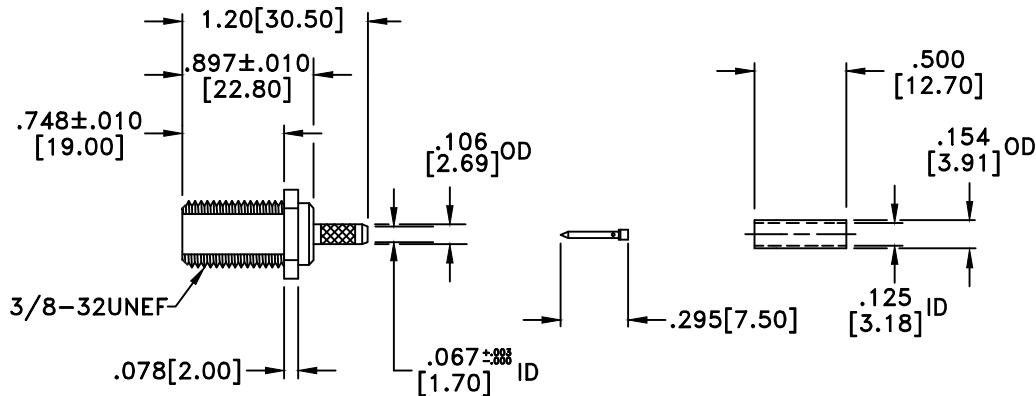


RECOMMENDED  
MOUNTING HOLE

| RevNo | Revision Notes   | Date   | Checked |
|-------|--|--------|---------|
| 1     | Ferrule ID Changed to .125"; Part Description Clarified to Reflect Flat Nose | 072501 | A.L.    |
| 2     | Shank and Ferrule ID/OD's Added or Clarified                                 | 081601 | A.L.    |
| 3     | Nose Flat Diameters Added; Chamfer Drawn                                     | 102401 | G.C.    |
| 4     | Shank ID Changed to .067"  | 090604 | G.C.    |
| 5     | Shank ID Tolerance Added   | 092704 | G.C.    |
| 6     | Barrel length Tolerance Added  | 010705 | G.C.    |
| 7     | RoHS Compliant   | 041305 | PC      |



ACCEPTS MALE PIN/  
CABLE CENTER CONDUCTOR  
Ø.020 [.50] - .047 [1.19]



RoHS Compliant

| MATERIAL                                    |               |
|---|---------------|
| BODY  | BRASS         |
| BODY PLATING                                | NICKEL        |
| CONTACT                                     | BRASS/BeCu    |
| CONTACT PLATING                             | GOLD          |
| DIELECTRIC                                  | TEFLON (PTFE) |
| 75 Ohm IMPEDANCE                            |               |
| 500V PEAK VOLTAGE RATING                    |               |
| TEMPERATURE RANGE: -55°C TO +155°C          |               |
| INTERFACE DIMENSIONS SIMILAR TO MIL-C-39012 |               |

|   |                        |                       |  |                          |                             |                                  |
|---|------------------------|-----------------------|--|--------------------------|-----------------------------|----------------------------------|
| MILLIMETER WAVE TECHNOLOGIES<br>6501 W. FRYE ROAD, #23<br>CHANDLER, AZ 85226  |                        |                       | F FEMALE BULKHEAD<br>CABLE END for RG179<br>FLAT NOSE  |                          |                             |                                  |
| Designed by<br>N. JAIN  | Checked by<br>W. CANON | Approved by<br>A. LEE | File name<br>MW-820-17975DEA   | TITLE<br>MW-820-17975DEA |                             |                                  |
| TOLERANCES<br>DIMENSIONS IN INCHES UNLESS OTHERWISE SPECIFIED<br>DECIMALS<br>.XX ± .02<br>.XXX ± .005<br>ANGULAR<br>± .06 |                        |                       | ALL DIMENSIONS ON THIS DRAWING ARE FOR REFERENCE<br>PURPOSES ONLY AND ARE SUBJECT TO CHANGE. |                          | REV.<br>7<br>DATE<br>052901 | Scale<br>NONE<br>Sheet<br>1 of 1 |