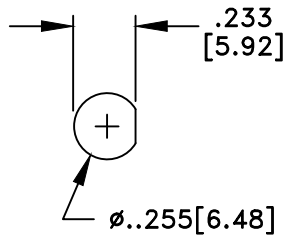
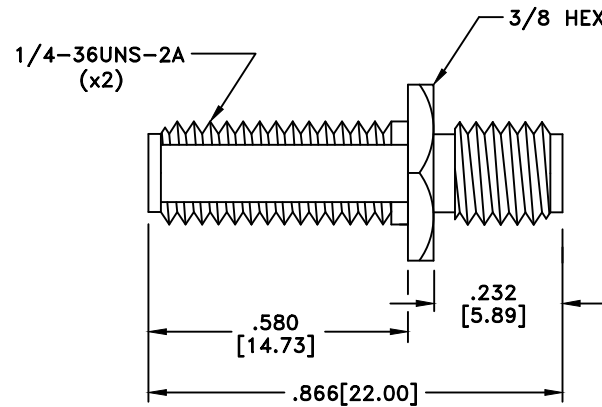
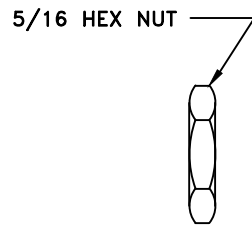


RevNo	Revision Notes	Date	Checked
1	RoHS Compliant	051105	PC
2	Frequency Range added	061013	GC



RECOMMENDED
MOUNTING HOLE



RoHS Compliant

MATERIALS

BODY	BRASS
BODY PLATING	GOLD
CONTACT	PHOSPHOR BRONZE
CONTACT PLATING	GOLD
DIELECTRIC	TEFLON (PTFE)

50 Ohm IMPEDANCE
500V PEAK VOLTAGE RATING
TEMPERATURE RANGE: -55°C TO +155°C
FREQUENCY RANGE: 0 to 18 GHz
INTERFACE DIMENSIONS SIMILAR TO MIL-C-39012

MILLIMETER WAVE TECHNOLOGIES
6501 W. FRYE ROAD, #23
CHANDLER, AZ 85226

ADAPTOR
SMA JACK to SMA BULKHEAD JACK

Designed by N. JAIN	Checked by W. CANON	Approved by A. LEE	File name MW-632-BH	TITLE MW-632-BH
------------------------	------------------------	-----------------------	------------------------	--------------------

TOLERANCES
DIMENSIONS IN INCHES UNLESS OTHERWISE SPECIFIED
DECIMALS ANGULAR
.XX ± .02 ± .06
.XXX ± .005

ALL DIMENSIONS ON THIS DRAWING ARE FOR REFERENCE
PURPOSES ONLY AND ARE SUBJECT TO CHANGE.

REV. 2	Scale NONE
DATE 060601	Sheet 1 of 1