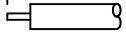
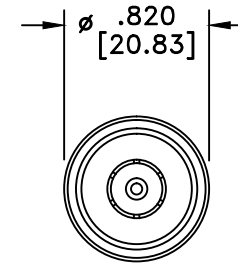
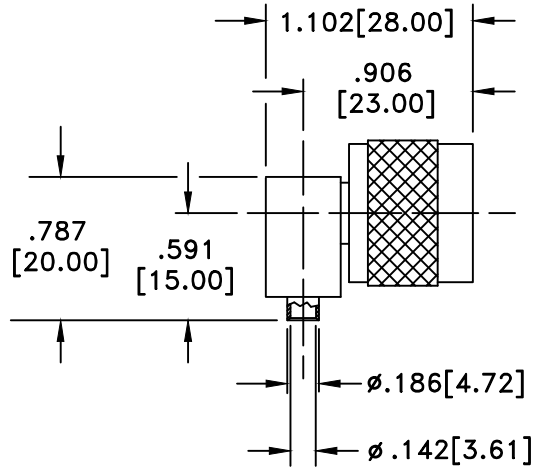


← .157[4.00]



STRIP LENGTH
M17/130-RG402

RevNo	Revision Notes	Date	Checked
1	RoHS Compliant	091805	PC



RoHS Compliant

MATERIALS

BODY	BRASS
BODY PLATING	NICKEL
CONTACT	BRASS
CONTACT PLATING	GOLD
DIELECTRIC	TEFLON (PTFE)
SCREW CAP	BRASS
SCREW CAP PLATING	NICKEL

50 Ohm IMPEDANCE
500V PEAK VOLTAGE RATING
TEMPERATURE RANGE: -55°C TO +155°C
INTERFACE DIMENSIONS SIMILAR TO MIL-C-39012

NOTE: INCLUDES SCREW CAP

MILLIMETER WAVE TECHNOLOGIES
6501 W. FRYE ROAD, #23
CHANDLER, AZ 85226

N MALE RIGHT ANGLE
SOLDER CABLE END
for .141" SEMI-RIGID

Designed by P. CHEN	Checked by S. NEUGESS	Approved by A. LEE	File name MW-355-141	TITLE MW-355-141											
<p>TOLERANCES DIMENSIONS IN INCHES UNLESS OTHERWISE SPECIFIED</p> <table border="0"> <tr> <td>DECIMALS</td> <td>ANGULAR</td> </tr> <tr> <td>.XX ± .02</td> <td>± .06</td> </tr> <tr> <td>.XXX ± .005</td> <td></td> </tr> </table>				DECIMALS	ANGULAR	.XX ± .02	± .06	.XXX ± .005		<p>ALL DIMENSIONS ON THIS DRAWING ARE FOR REFERENCE PURPOSES ONLY AND ARE SUBJECT TO CHANGE.</p>	<table border="1"> <tr> <td>REV. 1</td> <td>Scale NONE</td> </tr> <tr> <td>DATE 043003</td> <td>Sheet 1 of 1</td> </tr> </table>	REV. 1	Scale NONE	DATE 043003	Sheet 1 of 1
DECIMALS	ANGULAR														
.XX ± .02	± .06														
.XXX ± .005															
REV. 1	Scale NONE														
DATE 043003	Sheet 1 of 1														