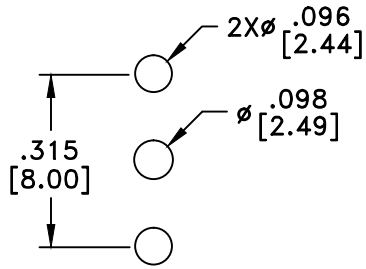
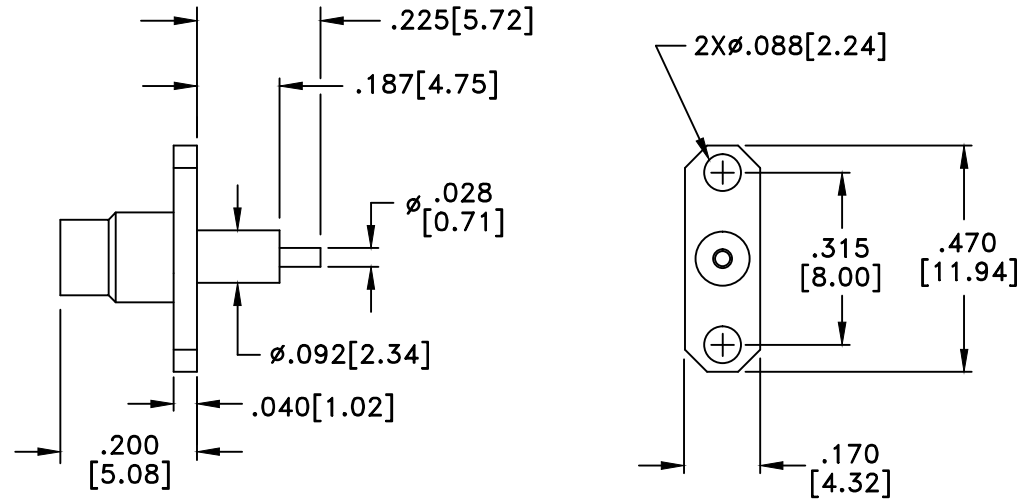


RevNo	Revision Notes	Date	Checked
1	Initial Release	062807	PC



RECOMMENDED  
HOLE PATTERN



RoHS Compliant

**MATERIALS**

BODY	BRASS
BODY PLATING	GOLD
CONTACT	BERYLLIUM COPPER
CONTACT PLATING	GOLD
DIELECTRIC	TEFLON (PTFE)

50 Ohm IMPEDANCE  
500V PEAK VOLTAGE RATING  
TEMPERATURE RANGE: -55°C TO +155°C  
INTERFACE DIMENSIONS SIMILAR TO MIL-C-39012

MILLIMETER WAVE TECHNOLOGIES 6501 W. FRYE ROAD, #23 CHANDLER, AZ 85226			MMCX JACK FLANGE MOUNT 2 HOLE FLANGE EXTENDED DIELECTRIC			
Designed by N. JAIN	Checked by W. CANON	Approved by A. LEE	File name MWXX-9012G-0506	TITLE MWXX-9012G-0506		
TOLERANCES <small>DIMENSIONS IN INCHES UNLESS OTHERWISE SPECIFIED</small> DECIMALS            ANGULAR .XX ± .02            ± .06 .XXX ± .005			ALL DIMENSIONS ON THIS DRAWING ARE FOR REFERENCE PURPOSES ONLY AND ARE SUBJECT TO CHANGE.		REV. 1 DATE 062807	Scale NONE Sheet 1 of 1