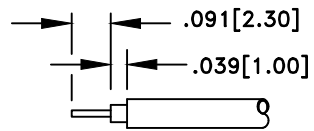
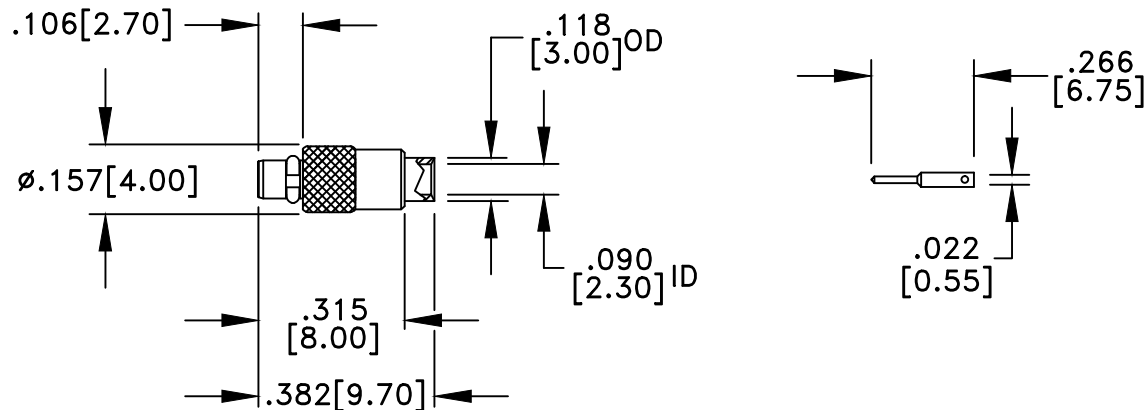


| RevNo | Revision Notes  | Date   | Checke |
|-------|-----------------|--------|--------|
| 1     | Initial Release | 111717 | GC     |



STRIP LENGTHS



RoHS Compliant

**MATERIALS**

|                 |               |
|-----------------|---------------|
| BODY            | BRASS         |
| BODY PLATING    | GOLD          |
| CONTACT         | BRASS         |
| CONTACT PLATING | GOLD          |
| DIELECTRIC      | TEFLON (PTFE) |
| SPACER          | TEFLON (PTFE) |

50 Ohm IMPEDANCE  
 500V PEAK VOLTAGE RATING  
 TEMPERATURE RANGE: -55°C TO +155°C  
 INTERFACE DIMENSIONS SIMILAR TO MIL-C-39012

|  |                          |   |                              |
|--|--------------------------|---|------------------------------|
| MILLIMETER WAVE TECHNOLOGIES<br>6501 W. FRYE ROAD, #23<br>CHANDLER, AZ 85226                       |                          | MMCX PLUG SOLDER CABLE END<br>for RG405 |                              |
| Designed by<br>P. CHEN   | Checked by<br>S. NEUGESS | Approved by<br>A. LEE                   | File name<br>MWXX-6001-G-086 |
| TOLERANCES<br>DIMENSIONS IN INCHES UNLESS OTHERWISE SPECIFIED<br>DECIMALS .XX ± .02<br>.XXX ± .005 |                          | TITLE<br>MWXX-6001-G-086                |                              |
| ALL DIMENSIONS ON THIS DRAWING ARE FOR REFERENCE<br>PURPOSES ONLY AND ARE SUBJECT TO CHANGE.       |                          | REV.<br>1                               | Scale<br>NONE                |
|  |                          | DATE<br>111717                          | Sheet<br>1 of 1              |