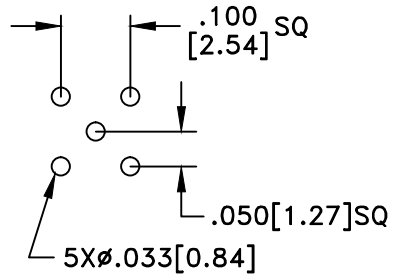
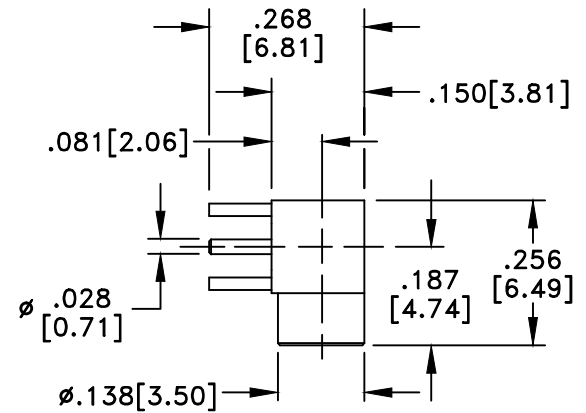
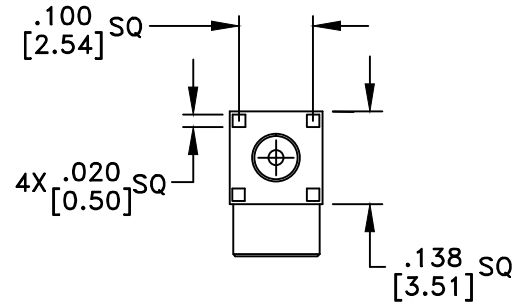


RevNo	Revision Notes	Date	Checked
1	Initial Release	011408	PC



RECOMMENDED
HOLE PATTERN



RoHS Compliant

MATERIALS

BODY	BRASS
BODY PLATING	GOLD
CONTACT	BERYLLIUM COPPER
CONTACT PLATING	30u" GOLD
DIELECTRIC	TEFLON (PTFE)

50 Ohm IMPEDANCE
500V PEAK VOLTAGE RATING
TEMPERATURE RANGE: -55°C TO +155°C
INTERFACE DIMENSIONS SIMILAR TO MIL-C-39012

MILLIMETER WAVE TECHNOLOGIES
6501 W. FRYE ROAD, #23
CHANDLER, AZ 85226

MMCX JACK RIGHT ANGLE
PCB MOUNT, 50 OHMS

Designed by P. CHEN	Checked by S. NEUGESS	Approved by A. LEE	File name MWXX-3300-GA-50	TITLE MWXX-3300-GA-50
------------------------	--------------------------	-----------------------	------------------------------	--------------------------

TOLERANCES
DIMENSIONS IN INCHES UNLESS OTHERWISE SPECIFIED
DECIMALS ANGULAR
.XX ± .02 ± .06
.XXX ± .005

ALL DIMENSIONS ON THIS DRAWING ARE FOR REFERENCE
PURPOSES ONLY AND ARE SUBJECT TO CHANGE.

REV. 1	Scale NONE
DATE 011408	Sheet 1 of 1