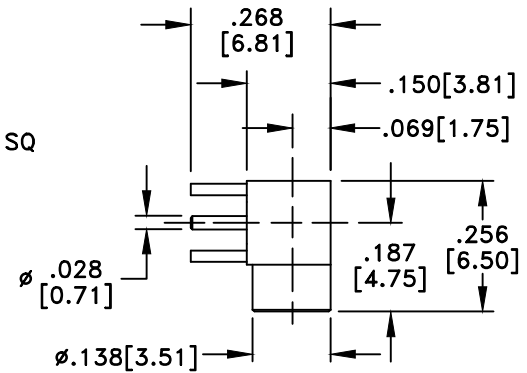
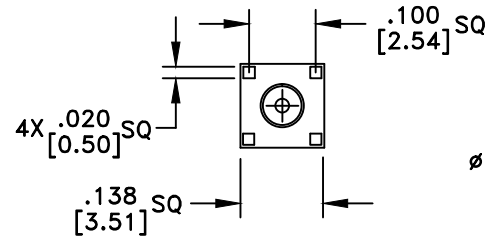


RECOMMENDED  
HOLE PATTERN

RevNo	Revision Notes	Date	Checked
1	Legs Increased to .028" Square from .020"	092402	P.Chen
2	RoHS Compliant	051005	GC
3	Legs thickness changed to .020"	070910	GC



RoHS Compliant

**MATERIALS**

BODY	BRASS
BODY PLATING	GOLD
CONTACT	BERYLLIUM COPPER
CONTACT PLATING	30u" GOLD
DIELECTRIC	TEFLON (PTFE)

50 Ohm IMPEDANCE  
500V PEAK VOLTAGE RATING  
TEMPERATURE RANGE: -55°C TO +155°C  
INTERFACE DIMENSIONS SIMILAR TO MIL-C-39012

MILLIMETER WAVE TECHNOLOGIES 6501 W. FRYE ROAD, #23 CHANDLER, AZ 85226		MMCX FEMALE RIGHT ANGLE PCB MOUNT w/4 LEGS	
Designed by P. CHEN	Checked by S. NEUGESS	Approved by A. LEE	File name MWXX-3300-G
TOLERANCES DIMENSIONS IN INCHES UNLESS OTHERWISE SPECIFIED DECIMALS .XX ± .02 .XXX ± .005		TITLE MWXX-3300-G	
ALL DIMENSIONS ON THIS DRAWING ARE FOR REFERENCE PURPOSES ONLY AND ARE SUBJECT TO CHANGE.		REV. 3	Scale NONE
		DATE 110200	Sheet 1 of 1