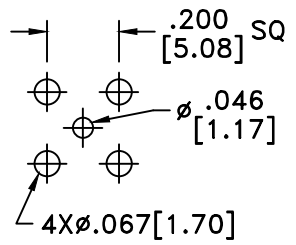
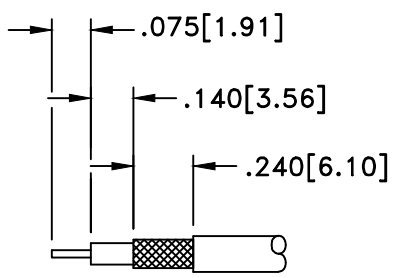


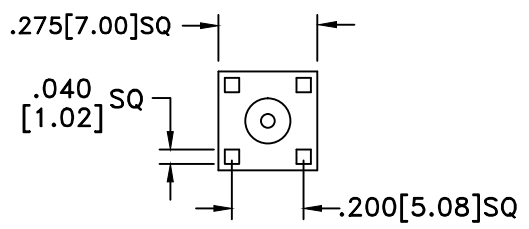
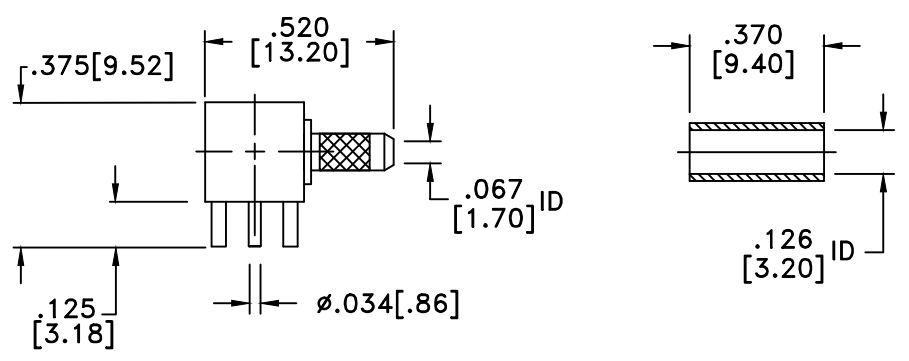
| RevNo | Revision Notes | Date | Checked |
|-------|----------------------------|--------|---------|
| 1 | Shank ID enlarged to .067" | 122204 | GC |
| 2 | RoHS Compliant | 052505 | GC |



RECOMMENDED
HOLE PATTERN



STRIP LENGTHS



RoHS Compliant

| MATERIALS | |
|-------------------|-----------------|
| BODY | BRASS |
| BODY PLATING | BRIGHT ACID TIN |
| CONTACT | BRASS |
| CONTACT PLATING | GOLD |
| DIELECTRIC | TEFLON (PTFE) |
| FERRULE | BRASS |
| FERRULE PLATING | NICKEL |
| SCREW CAP | BRASS |
| SCREW CAP PLATING | BRIGHT ACID TIN |

IMPEDANCE DEPENDS ON CABLE
500V PEAK VOLTAGE RATING
TEMPERATURE RANGE: -55°C TO +155°C
INTERFACE DIMENSIONS SIMILAR TO MIL-C-39012

| | | | | | | |
|---|------------------------|-----------------------|--|-------------------|----------------|-----------------|
| MILLIMETER WAVE TECHNOLOGIES 6501 W. FRYE ROAD, #23 CHANDLER, AZ 85226 | | | CABLE TERMINATOR R/A PCB MOUNT 4 LEGS for RG174, RG316, RG179 | | | |
| Designed by N. JAIN | Checked by W. CANON | Approved by A. LEE | File name MWT-2420 | TITLE MWT-2420 | | |
| TOLERANCES DIMENSIONS ARE IN INCHES UNLESS OTHERWISE SPECIFIED DECIMALS ANGULAR .XX ± .02 ± .06 .XXX ± .005 ± .01 DO NOT SCALE THIS DRAWING | | | ALL DIMENSIONS ON THIS DRAWING ARE FOR REFERENCE PURPOSES ONLY AND ARE SUBJECT TO CHANGE. | | REV. 2 | Scale NONE |
| | | | | | DATE 061501 | Sheet 1 of 1 |