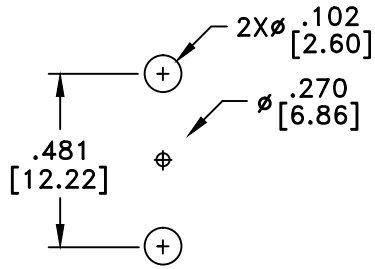
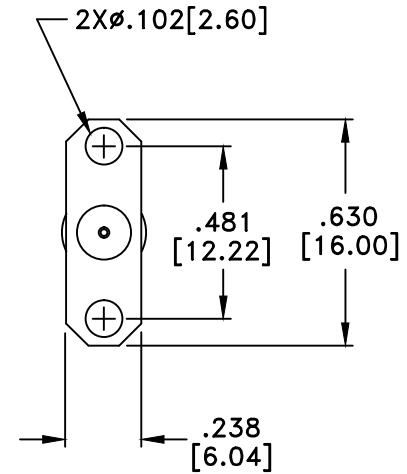
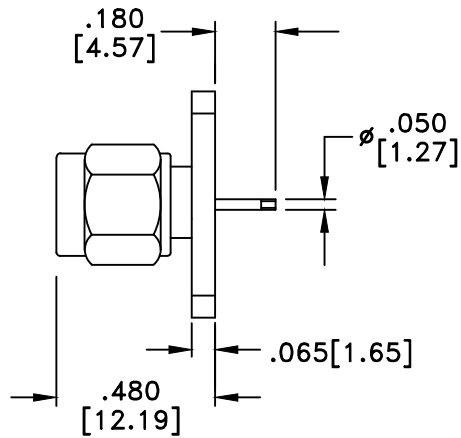


RevNo	Revision Notes	Date	Checked
1	Initial Release	061601	GC



RECOMMENDED
HOLE PATTERN



RoHS Compliant

MATERIALS

BODY	BRASS
BODY PLATING	GOLD
CONTACT	BRASS
CONTACT PLATING	GOLD
DIELECTRIC	TEFLON (PTFE)

50 Ohm IMPEDANCE
500V PEAK VOLTAGE RATING
TEMPERATURE RANGE: -55°C TO +155°C
INTERFACE DIMENSIONS SIMILAR TO MIL-C-39012

MILLIMETER WAVE TECHNOLOGIES
6501 W. FRYE ROAD, #23
CHANDLER, AZ 85226

SMA PLUG PANEL MOUNT
2 HOLE FLANGE
SOLDER CUP

Designed by N. JAIN	Checked by W. CANON	Approved by A. LEE	File name MWA-6215-G	TITLE MWA-6215-G	
TOLERANCES <small>DIMENSIONS IN INCHES UNLESS OTHERWISE SPECIFIED</small> DECIMALS ANGULAR .XX ± .02 ± .06 .XXX ± .005		ALL DIMENSIONS ON THIS DRAWING ARE FOR REFERENCE PURPOSES ONLY AND ARE SUBJECT TO CHANGE.		REV. 1 DATE 060601	Scale NONE Sheet 1 of 1