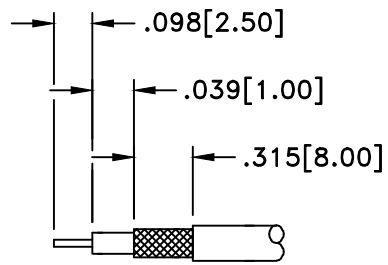
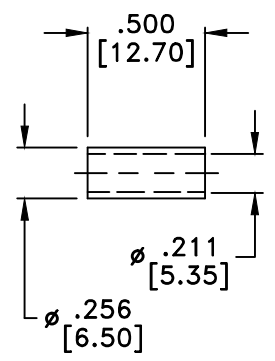
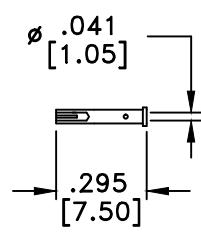
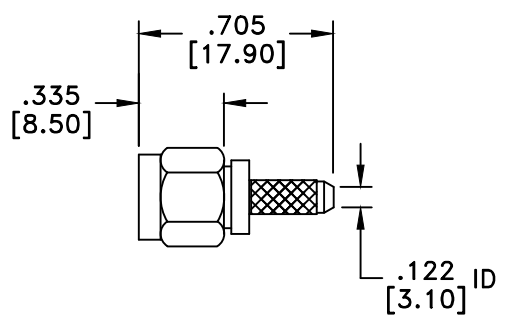
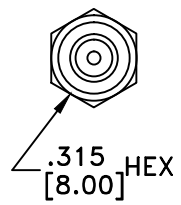


RevNo	Revision Notes	Date	Checked
1	Initial Release	022515	GC



STRIP LENGTHS  
M17/28-RG58



RoHS Compliant

MATERIALS	
BODY	BRASS
BODY PLATING	NICKEL
CONTACT	PHOSPHOR BRONZE
CONTACT PLATING	GOLD
DIELECTRIC	TEFLON (PTFE)
GASKET	SILICONE
RETAINING RING	STAINLESS STEEL

50 Ohm IMPEDANCE  
500V PEAK VOLTAGE RATING  
TEMPERATURE RANGE: -55°C TO +155°C  
INTERFACE DIMENSIONS SIMILAR TO MIL-C-39012

MILLIMETER WAVE TECHNOLOGIES 6501 W. FRYE ROAD, #23 CHANDLER, AZ 85226			REVERSE POLARITY SMA PLUG CRIMP CABLE END for RG858, LMR195		
Designed by P. CHEN	Checked by S. NEUGESS	Approved by A. LEE	File name MWA-6001-RP-58	TITLE MWA-6001-RP-58	
<small>TOLERANCES DIMENSIONS IN INCHES UNLESS OTHERWISE SPECIFIED</small> DECIMALS .XX ± .02 .XXX ± .005 ANGULAR ± .06			ALL DIMENSIONS ON THIS DRAWING ARE FOR REFERENCE PURPOSES ONLY AND ARE SUBJECT TO CHANGE.		REV. 1 DATE 022515 Scale NONE Sheet 1 of 1