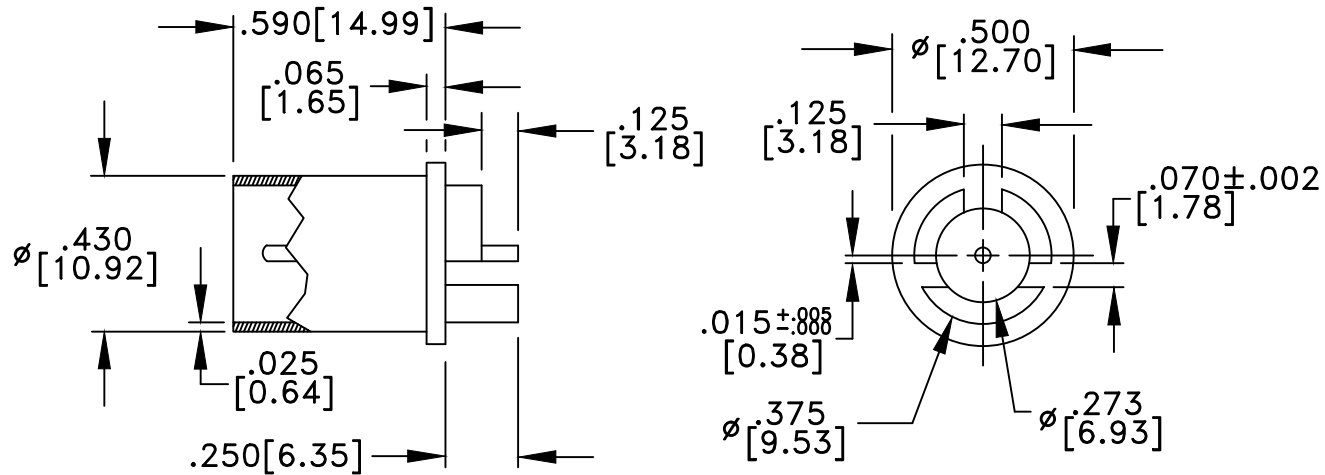


| RevNo | Revision Notes | Date | Checke |
|-------|----------------|--------|--------|
| 1 | RoHS Compliant | 051005 | PC |



RoHS Compliant

MATERIALS

| | |
|-----------------|-----------------|
| BODY | BRASS |
| BODY PLATING | BRIGHT ACID TIN |
| CONTACT | BRASS |
| CONTACT PLATING | BRIGHT ACID TIN |
| DIELECTRIC | POLYPROPYLENE |

75 Ohm IMPEDANCE
 500V PEAK VOLTAGE RATING
 TEMPERATURE RANGE: -55°C TO +155°C
 INTERFACE DIMENSIONS SIMILAR TO MIL-C-39012

| | | | |
|--|-----------------------|--|-------------------------|
| MILLIMETER WAVE TECHNOLOGIES 6501 W. FRYE ROAD, #23 CHANDLER, AZ 85226 | | F MALE PRESS-FIT PCB EDGE MOUNT | |
| Designed by G. COLEMERES. | Checked by NEUGESS | Approved by A. LEE | File name MW-856-070 |
| | | TITLE MW-856-070 | |
| TOLERANCES DIMENSIONS IN INCHES UNLESS OTHERWISE SPECIFIED | | ALL DIMENSIONS ON THIS DRAWING ARE FOR REFERENCE PURPOSES ONLY AND ARE SUBJECT TO CHANGE. | |
| DECIMALS .XX ± .02 .XXX ± .005 | ANGULAR ± .06 | REV. 1 | Scale NONE |
| | | DATE 041502 | Sheet 1 of 1 |