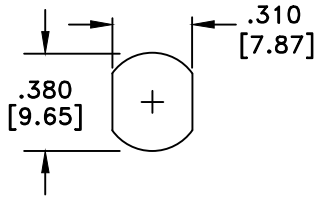
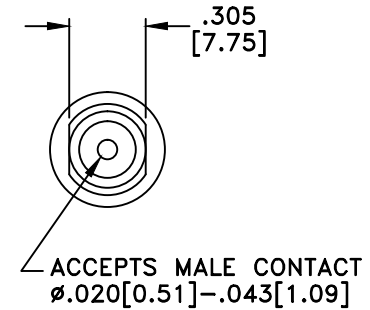
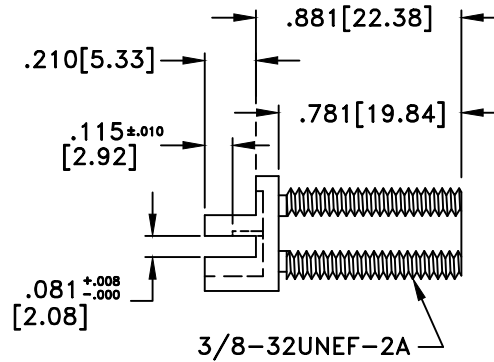
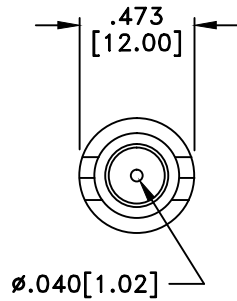


RevNo	Revision Notes	Date	Checked
1	Initial Release	020211	PC



RECOMMENDED MOUNTING HOLE



RoHS COMPLIANT

NOTES: Includes HEX NUT and INTERNAL TOOTH LOCKWASHER

MATERIALS

BODY	BRASS
BODY PLATING	BRIGHT ACID TIN
CONTACT	BRASS/BeCu
CONTACT PLATING	GOLD
DIELECTRIC	TEFLON (PTFE)

75 Ohm IMPEDANCE
 500V PEAK VOLTAGE RATING
 TEMPERATURE RANGE: -40°C TO +200°C
 INTERFACE DIMENSIONS SIMILAR TO MIL-C-39012

MILLIMETER WAVE TECHNOLOGIES 6501 W. FRYE ROAD, #23 CHANDLER, AZ 85226			F FEMALE EDGE MOUNT H/P 75 OHMS		
Designed by G.COLEMERE	Checked by W. CANON	Approved by A. LEE	File name MW-846-DD81-75	TITLE MW-846-DD81-75	
TOLERANCES <small>DIMENSIONS IN INCHES UNLESS OTHERWISE SPECIFIED</small> DECIMALS ANGULAR .XX ± .02 ± .06 .XXX ± .005			ALL DIMENSIONS ON THIS DRAWING ARE FOR REFERENCE PURPOSES ONLY AND ARE SUBJECT TO CHANGE.		REV. 1 DATE 020211 Scale NONE Sheet 1 of 1