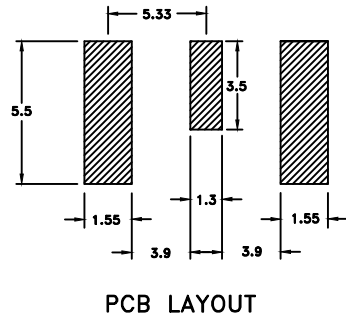
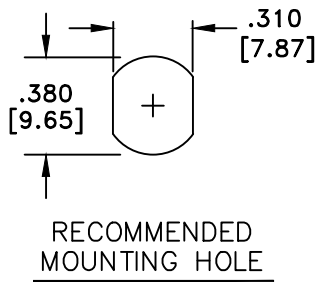
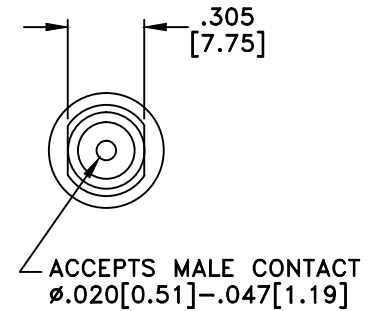
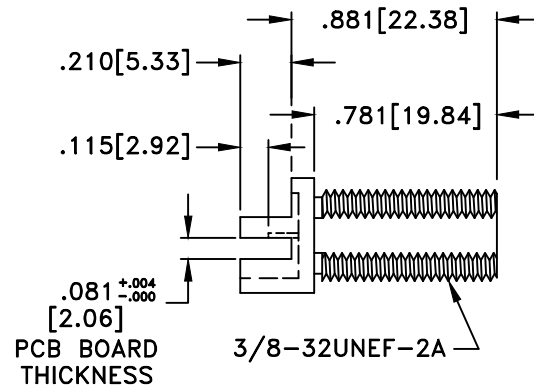
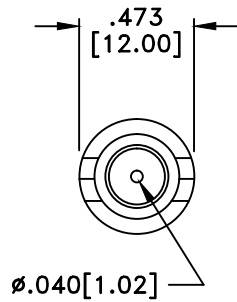


RevNo	Revision Notes	Date	Checked
1	Hex Nut and Internal Tooth Lockwasher Added	111001	A.L.
2	PCB Layout added	010510	GC



PCB LAYOUT



RoHS Compliant

NOTES: Includes HEX NUT and INTERNAL TOOTH LOCKWASHER

MATERIALS	
BODY	BRASS
BODY PLATING	BRIGHT ACID TIN
CONTACT	BRASS
CONTACT PLATING	GOLD
DIELECTRIC (MAIN)	NYLON/30% FIBERGLASS
DIELECTRIC (DISC)	TEFLON (PTFE)
75 Ohm IMPEDANCE	
500V PEAK VOLTAGE RATING	
TEMPERATURE RANGE: -55°C TO +155°C	
INTERFACE DIMENSIONS SIMILAR TO MIL-C-39012	

MILLIMETER WAVE TECHNOLOGIES 6501 W. FRYE ROAD, #23 CHANDLER, AZ 85226			F FEMALE EDGE MOUNT SOLDER CONTACT, H/P			
Designed by N. JAIN	Checked by W. CANON	Approved by A. LEE	File name MW-846-CB-DDE	TITLE MW-846-CB-DDE		
<b>TOLERANCES</b> DIMENSIONS IN INCHES UNLESS OTHERWISE SPECIFIED DECIMALS                      ANGULAR .XX ± .02                              ± .06 .XXX ± .005			ALL DIMENSIONS ON THIS DRAWING ARE FOR REFERENCE PURPOSES ONLY AND ARE SUBJECT TO CHANGE.		REV. 2 DATE 070601	Scale NONE Sheet 1 of 1