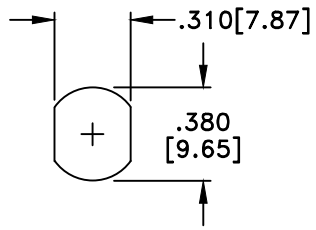
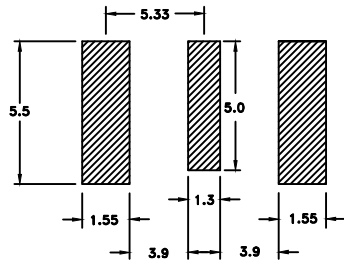


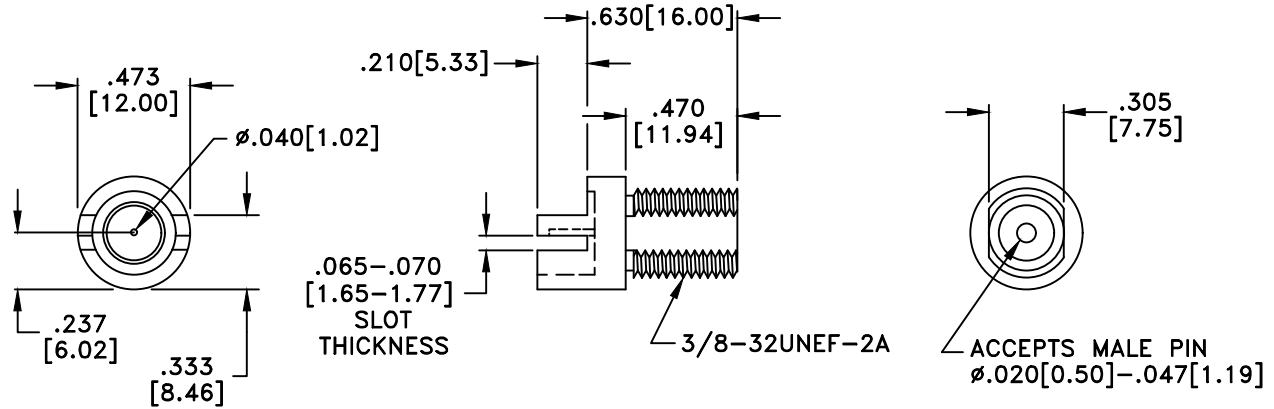
RevNo	Revision Notes	Date	Checked
1	RoHS Compliant	041105	GC
2	PCB Layout added	022908	GC



RECOMMENDED MOUNTING HOLE



PCB LAYOUT



RoHS Compliant

**MATERIALS**

BODY	BRASS
BODY PLATING	BRIGHT ACID TIN
CONTACT	BRASS/BeCu
CONTACT PLATING	BRIGHT ACID TIN/GOLD
DIELECTRIC	TEFLON (PTFE)

75 Ohm IMPEDANCE  
 500V PEAK VOLTAGE RATING  
 TEMPERATURE RANGE: -55°C TO +155°C  
 INTERFACE DIMENSIONS SIMILAR TO MIL-C-39012

MILLIMETER WAVE TECHNOLOGIES  
 6501 W. FRYE ROAD, #23  
 CHANDLER, AZ 85226

F FEMALE PCB EDGE MOUNT  
 H/P 75 OHMS

Designed by P. CHEN	Checked by S. NEUGESS	Approved by A. LEE	File name MW-846-C-DD-75	TITLE MW-846-C-DD-75
TOLERANCES <small>DIMENSIONS IN INCHES UNLESS OTHERWISE SPECIFIED</small> DECIMALS .XX ± .02 .XXX ± .005 ANGULAR ± .06			ALL DIMENSIONS ON THIS DRAWING ARE FOR REFERENCE PURPOSES ONLY AND ARE SUBJECT TO CHANGE.	
			REV. 2	Scale NONE
			DATE 031501	Sheet 1 of 1