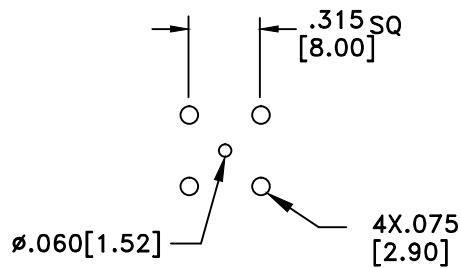
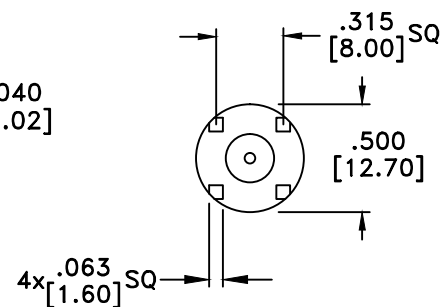
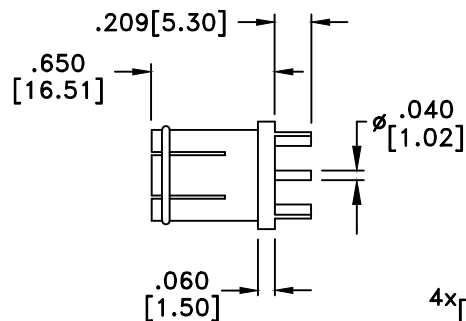
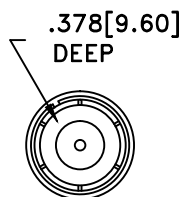


RevNo	Revision Notes	Date	Checked
1	Initial Release	060509	GC



RECOMMENDED
HOLE PATTERN



RoHS COMPLIANT

MATERIALS

BODY	BRASS
BODY PLATING	NICKEL
CONTACT	BRASS
CONTACT PLATING	GOLD
DIELECTRIC	TEFLON (PTFE)
SPRING	SK5
SPRING PLATING	NICKEL

75 Ohm IMPEDANCE
500V PEAK VOLTAGE RATING
TEMPERATURE RANGE: -55°C TO $+155^{\circ}\text{C}$
INTERFACE DIMENSIONS SIMILAR TO MIL-C-39012

MILLIMETER WAVE TECHNOLOGIES
6501 W. FRYE ROAD, #23
CHANDLER, AZ 85226

F MALE PUSH-FIT
PCB MOUNT

Designed by
P. CHEN

Checked by
C.HARTWELL

Approved by
A. LEE

File name
MW-831

TITLE

MW-831

TOLERANCES
DIMENSIONS IN INCHES UNLESS OTHERWISE SPECIFIED
DECIMALS ANGULAR
.XX $\pm .02$ $\pm .06$
.XXX $\pm .005$

ALL DIMENSIONS ON THIS DRAWING ARE FOR REFERENCE
PURPOSES ONLY AND ARE SUBJECT TO CHANGE.

REV.
1

DATE
060509

Scale
NONE

Sheet
1 of 1