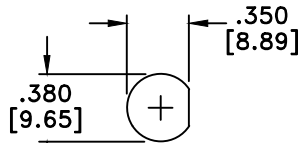
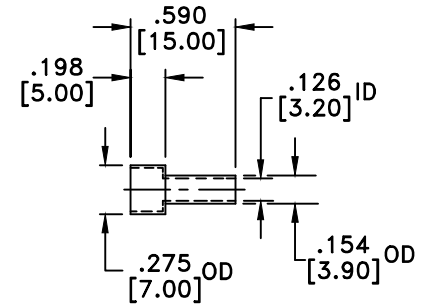
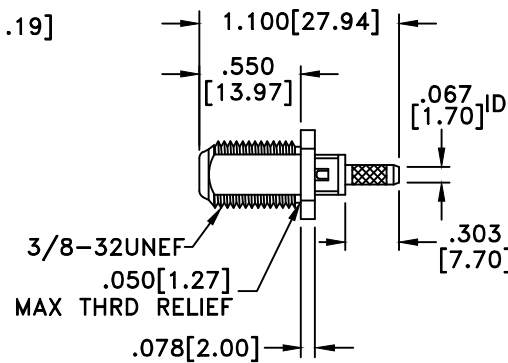
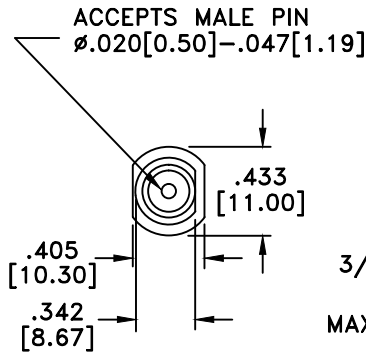


STRIP LENGTHS
M17/94-RG179



RECOMMENDED
MOUNTING HOLE

RevNo	Revision Notes	Date	Checked
1	Width across D-flat changed to .342"	011405	GC
2	Body plating changed to bright acid tin	011705	GC
3	Ferrule materials clarified	042505	GC
4	Contact materials specified; high performance design called out; RoHS compliant	120705	GC



RoHS Compliant

MATERIAL

BODY	BRASS
BODY PLATING	BRIGHT ACID TIN
CONTACT	BRASS
CONTACT PRONGS	BERYLLIUM COPPER
CONTACT PLATING	GOLD
DIELECTRIC	TEFLON (PTFE)
FERRULE	BRASS
FERRULE PLATING	BRIGHT ACID TIN

75 Ohm IMPEDANCE
500V PEAK VOLTAGE RATING
TEMPERATURE RANGE: -55°C TO +155°C
INTERFACE DIMENSIONS SIMILAR TO MIL-C-39012

HIGH PERFORMANCE DESIGN

MILLIMETER WAVE TECHNOLOGIES
6501 W. FRYE ROAD, #23
CHANDLER, AZ 85226

F FEMALE CHASSIS MOUNT
SOLDER/CRIMP CABLE END
H/P 75 OHMS

Designed by N. JAIN	Checked by W. CANON	Approved by A. LEE	File name MW-820-179-75DY	TITLE MW-820-179-75DY
------------------------	------------------------	-----------------------	------------------------------	--------------------------

TOLERANCES
DIMENSIONS ARE IN INCHES UNLESS
OTHERWISE SPECIFIED
DECIMALS ANGULAR
.XX ± .02 ± .06
.XXX ± .005
DO NOT SCALE THIS DRAWING

ALL DIMENSIONS ON THIS DRAWING ARE FOR REFERENCE
PURPOSES ONLY AND ARE SUBJECT TO CHANGE.

REV. 4	Scale NONE
DATE 032901	Sheet 1 of 1