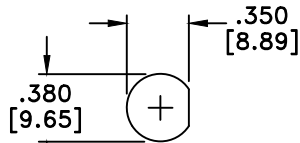


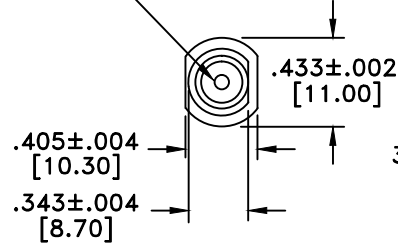
STRIP LENGTHS  
M17/94-RG179



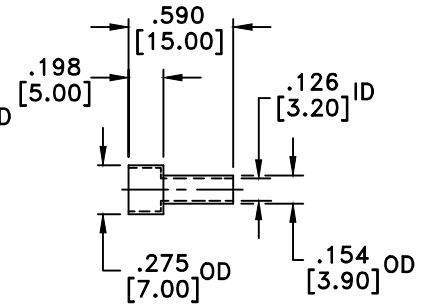
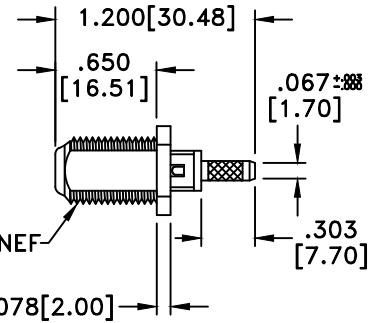
RECOMMENDED  
MOUNTING HOLE

RevNo	Revision Notes	Date	Checked
1	Ferrule ID Changed to .125"; OD Added	020202	A.L.
2	Width across D-flat clarified	050205	G.C.
3	RoHS Compliant	051205	G.C.
4	Contact materials specified; high performance design called out	120705	G.C.
5	Shank ID changed	032706	G.C.
6	Tolerances added to flats dimensions	110915	G.C.

ACCEPTS MALE PIN  
∅.020[0.50]-.047[1.19]



3/8-32UNEF



RoHS Compliant

**MATERIAL**

BODY	BRASS
BODY PLATING	NICKEL
CONTACT	BRASS
CONTACT PRONGS	BERYLLIUM COPPER
CONTACT PLATING	GOLD
DIELECTRIC	TEFLON (PTFE)
FERRULE	BRASS
FERRULE PLATING	NICKEL

75 Ohm IMPEDANCE  
500V PEAK VOLTAGE RATING  
TEMPERATURE RANGE: -55°C TO +155°C  
INTERFACE DIMENSIONS SIMILAR TO MIL-C-39012

HIGH PERFORMANCE DESIGN

MILLIMETER WAVE TECHNOLOGIES  
6501 W. FRYE ROAD, #23  
CHANDLER, AZ 85226

F FEMALE CHASSIS MOUNT  
SOLDER/CRIMP CABLE END  
H/P 75 OHMS

Designed by N. JAIN	Checked by W. CANON	Approved by A. LEE	File name MW-820-179-75D	TITLE MW-820-179-75D
------------------------	------------------------	-----------------------	-----------------------------	-------------------------

TOLERANCES  
DIMENSIONS ARE IN INCHES UNLESS  
OTHERWISE SPECIFIED  
DECIMALS ANGULAR  
.XX ± .02 ± .06  
.XXX ± .005  
DO NOT SCALE THIS DRAWING

ALL DIMENSIONS ON THIS DRAWING ARE FOR REFERENCE  
PURPOSES ONLY AND ARE SUBJECT TO CHANGE.

REV. 6	Scale NONE
DATE 032901	Sheet 1 of 1