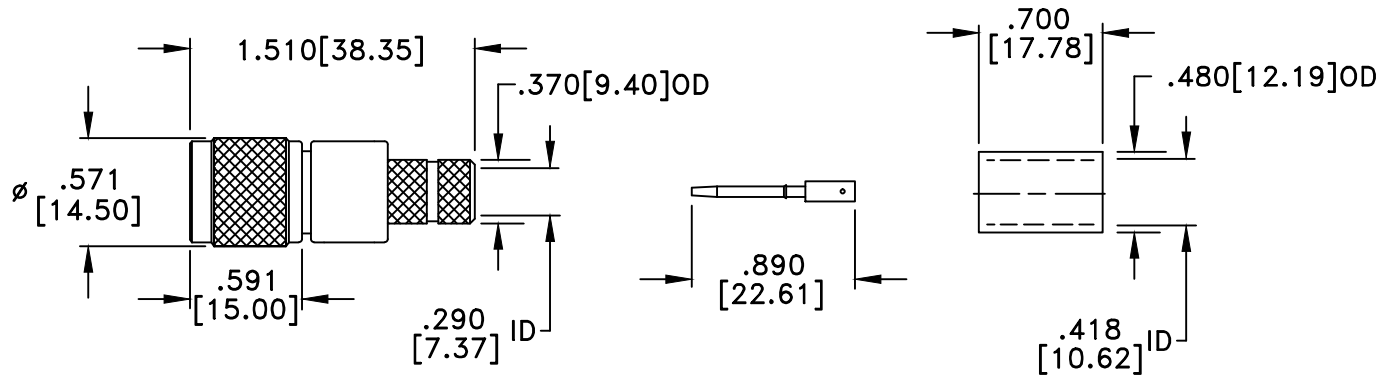


RevNo	Revision Notes	Date	Checked
1	Initial Release	081210	GC



MATERIALS

BODY	BRASS
BODY PLATING	NICKEL
CONTACT	BERYLLIUM COPPER
CONTACT PLATING	GOLD
DIELECTRIC	TEFLON (PTFE)

50 Ohm IMPEDANCE
500V PEAK VOLTAGE RATING
TEMPERATURE RANGE: -55°C TO +155°C
INTERFACE DIMENSIONS SIMILAR TO MIL-C-39012

MILLIMETER WAVE TECHNOLOGIES
6501 W. FRYE ROAD, #23
CHANDLER, AZ 85226

TNC PLUG
CRIMP CABLE END
for LMR400

Designed by N. JAIN	Checked by S. NEUGESS	Approved by A. LEE	File name MW-750-L400	TITLE MW-750-L400
TOLERANCES DIMENSIONS IN INCHES UNLESS OTHERWISE SPECIFIED DECIMALS .XX ± .02 .001 ± .005		ALL DIMENSIONS ON THIS DRAWING ARE FOR REFERENCE PURPOSES ONLY AND ARE SUBJECT TO CHANGE.		REV. 1 DATE 081210 Scale NONE Sheet 1 of 1