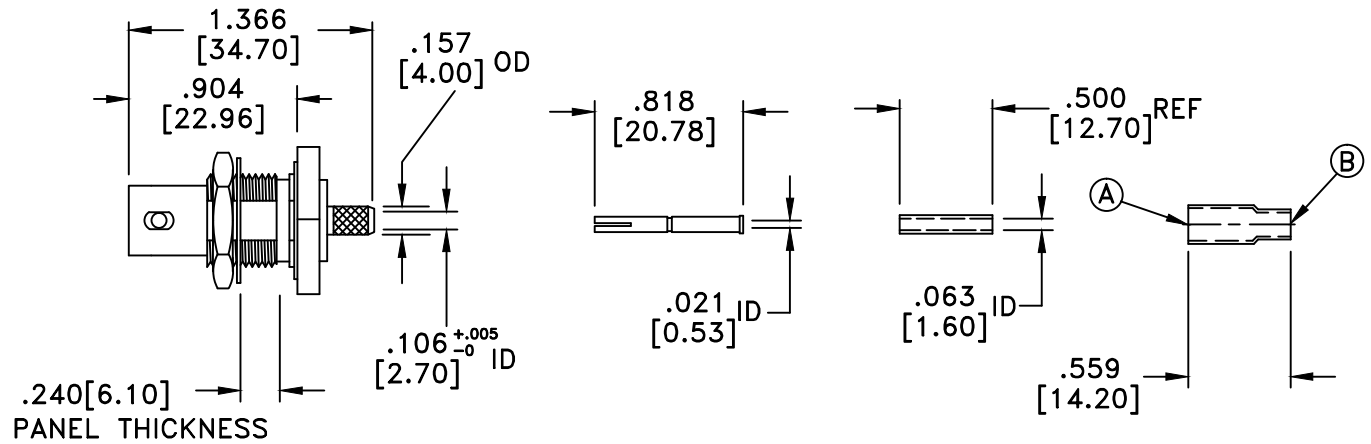


RevNo	Revision Notes	Date	Checked
1	Ferrule Dim. B OD Corrected to .138", Strip Length Changed	082901	A.L.
2	Overall Dimensional change; RoHS Compliant	060205	PC
3	D-flat rotated	122410	GC



RoHS Compliant

FERRULE DIMENSIONS: Ⓐ ID = .189[4.80]; OD = .224[5.70]
 Ⓑ ID = .118[3.00], OD = .138[3.50]

MATERIALS	
BODY	BRASS
BODY PLATING	NICKEL
CONTACT	PHOSPHOR BRONZE
CONTACT PLATING	GOLD
DIELECTRIC	TEFLON (PTFE)
FERRULE	BRASS
FERRULE PLATING	NICKEL
GASKET	SILICONE

50 Ohm IMPEDANCE
 500V PEAK VOLTAGE RATING
 TEMPERATURE RANGE: -55°C TO +155°C
 INTERFACE DIMENSIONS SIMILAR TO MIL-C-39012

MILLIMETER WAVE TECHNOLOGIES 6501 W. FRYE ROAD, #23 CHANDLER, AZ 85226		BNC FEMALE BULKHEAD CABLE END for RD316	
Designed by N. JAIN	Checked by W. CANON	Approved by A. LEE	File name MW-280-E-D316
TOLERANCES DIMENSIONS IN INCHES UNLESS OTHERWISE SPECIFIED		TITLE MW-280-E-D316	
DECIMALS .XX ± .02 .XXX ± .005		ALL DIMENSIONS ON THIS DRAWING ARE FOR REFERENCE PURPOSES ONLY AND ARE SUBJECT TO CHANGE.	
ANGULAR ± .06		REV. 3	Scale NONE
		DATE 062001	Sheet 1 of 1