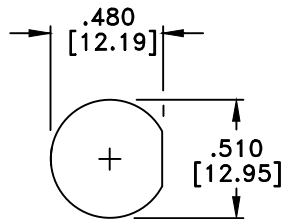
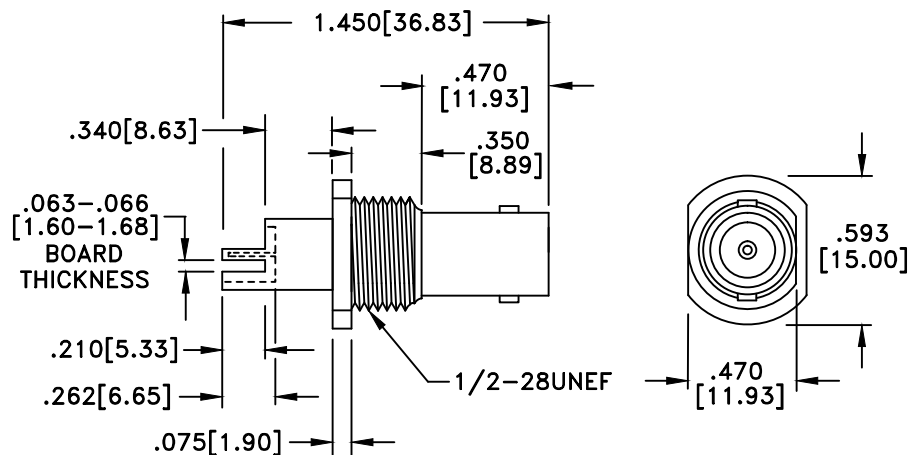
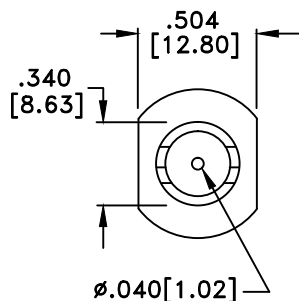


RevNo	Revision Notes	Date	Checked
1	RoHS Compliant	040505	GC



RECOMMENDED
MOUNTING HOLE



RoHS COMPLIANT

NOTES: INCLUDES HEX NUT & INTERNAL TOOTH LOCKWASHER
PLEASE NOTE D-FLAT ON FAR SIDE OF THREADS

MATERIALS

BODY	BRASS
BODY PLATING	NICKEL
CONTACT	BERYLLIUM COPPER
CONTACT PLATING	GOLD
DIELECTRIC	TEFLON (PTFE)

50 Ohm IMPEDANCE
500V PEAK VOLTAGE RATING
TEMPERATURE RANGE: -55°C TO +155°C
INTERFACE DIMENSIONS SIMILAR TO MIL-C-39012

MILLIMETER WAVE TECHNOLOGIES
6501 W. FRYE ROAD, #23
CHANDLER, AZ 85226

BNC FEMALE BULKHEAD
PCB EDGE MOUNT

Designed by
N. JAIN

Checked by
W. CANON

Approved by
A. LEE

File name
MW-236-BH

TITLE

MW-236-BH

TOLERANCES
DIMENSIONS IN INCHES UNLESS OTHERWISE SPECIFIED
DECIMALS ANGULAR
.XX ± .02 ± .06
.XXX ± .005

ALL DIMENSIONS ON THIS DRAWING ARE FOR REFERENCE
PURPOSES ONLY AND ARE SUBJECT TO CHANGE.

REV.
1

DATE
120301

Scale
NONE

Sheet
1 of 1