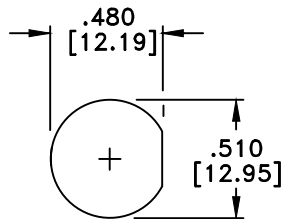
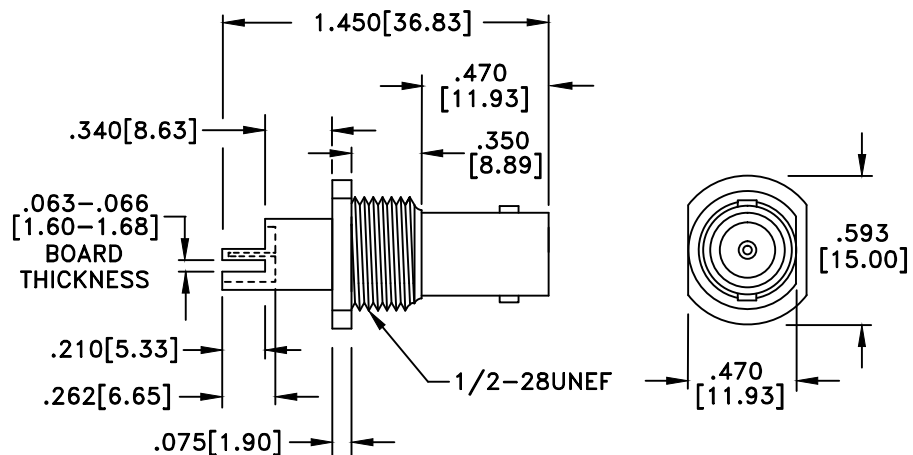
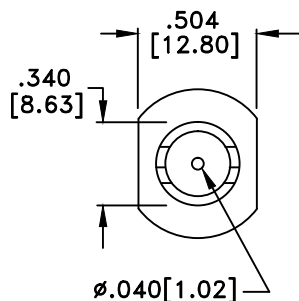


RevNo	Revision Notes	Date	Checked
1	RoHS Compliant	061605	PC



RECOMMENDED  
MOUNTING HOLE



RoHS Compliant

NOTES: INCLUDES HEX NUT & INTERNAL TOOTH LOCKWASHER  
PLEASE NOTE D-FLAT ON FAR SIDE OF THREADS

### MATERIALS

BODY	BRASS
BODY PLATING	NICKEL
CONTACT	BERYLLIUM COPPER
CONTACT PLATING	GOLD
DIELECTRIC	TEFLON (PTFE)

75 Ohm IMPEDANCE  
500V PEAK VOLTAGE RATING  
TEMPERATURE RANGE: -55°C TO +155°C  
INTERFACE DIMENSIONS SIMILAR TO MIL-C-39012

MILLIMETER WAVE TECHNOLOGIES  
6501 W. FRYE ROAD, #23  
CHANDLER, AZ 85226

BNC FEMALE BULKHEAD  
PCB EDGE MOUNT

Designed by  
N. JAIN

Checked by  
W. CANON

Approved by  
A. LEE

File name  
MW-236-B75H

TITLE  
MW-236-B75H

TOLERANCES  
DIMENSIONS IN INCHES UNLESS OTHERWISE SPECIFIED  
DECIMALS ANGULAR  
.XX ± .02 ± .06  
.XXX ± .005

ALL DIMENSIONS ON THIS DRAWING ARE FOR REFERENCE  
PURPOSES ONLY AND ARE SUBJECT TO CHANGE.

REV.	Scale
1	NONE
DATE	Sheet
120301	1 of 1